



# St. Clair County Winter Achievement 2017 4-H & Youth Fair Dog Project Record Book

*Created and Distributed by St. Clair County Dog Committee & MSUE 4-H Program*

Exhibitor Name: \_\_\_\_\_ Years in Dog Project: \_\_\_\_\_  
4-H Club Name: \_\_\_\_\_ Age as of 1/1/2017 \_\_\_\_\_

- • • • • • • • • • • • • • • •
- INTERMEDIATE 3-4 years in Project •
- SENIOR 5 or more years in Project •
- • • • • • • • • • • • • • • •

Place photo of project animal and member here.

Member's Signature \_\_\_\_\_ Start date of book \_\_\_\_/\_\_\_\_/\_\_\_\_

4-H Leader's signature \_\_\_\_\_

Other 4-H project areas that you are involved in \_\_\_\_\_  
\_\_\_\_\_  
\_\_\_\_\_

## 2017 Dog Project Record Book Requirements

### Requirements for Book

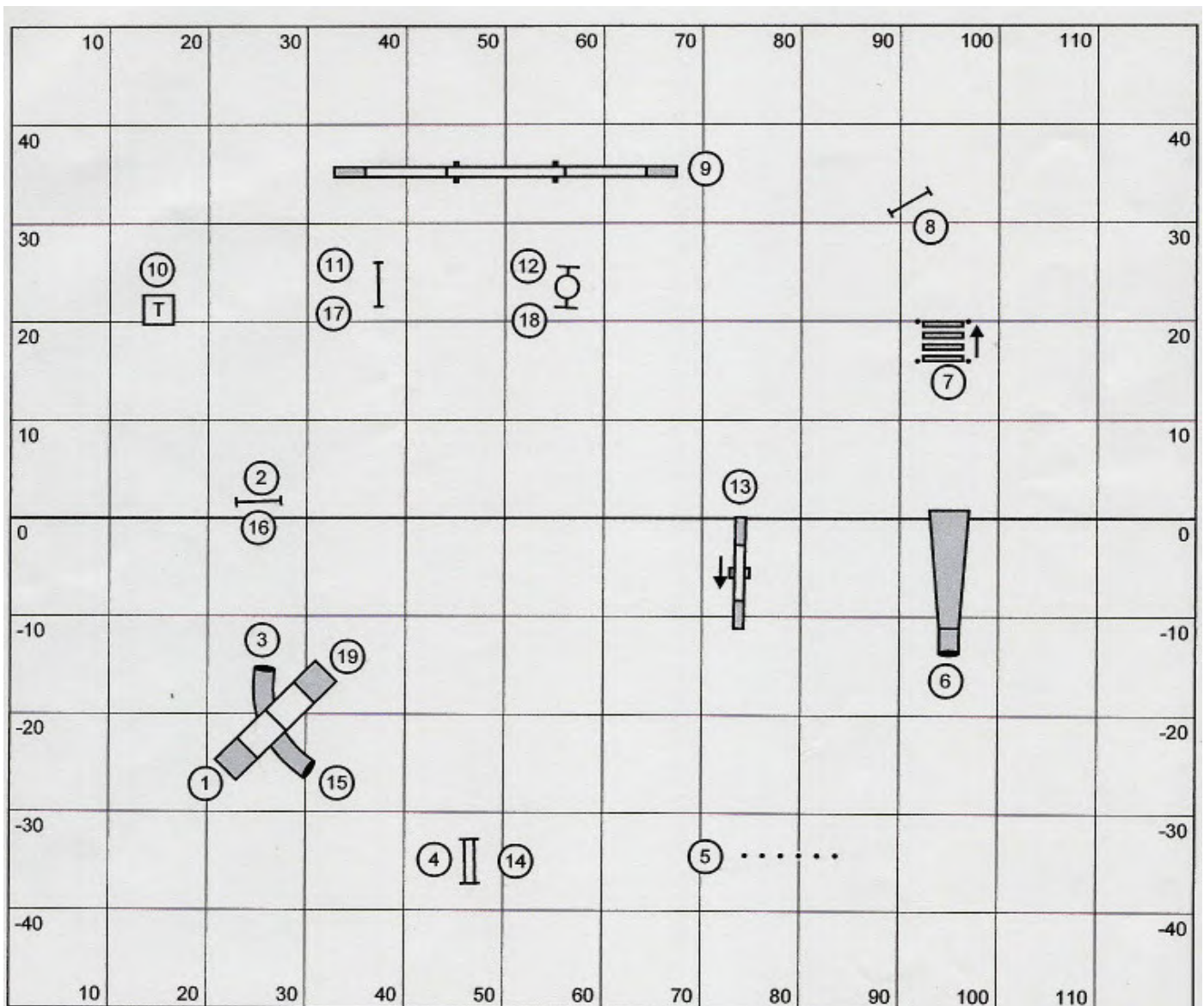
1. Must be signed by leader and exhibitor.

### To Be Considered for Placement:

1. Work must be done by exhibitor. Adults may help but may not complete the actual book.
2. Book must be completed to be considered for placement.
3. There is no extra credit for doing pages that aren't counted for your total score.
4. Book pages need to be in a 1" white binder.
5. Photo of dog and handler on front cover of binder behind the clear overlay.
6. Interview score will be added to score from book itself for final placements.
7. The showmanship and agility books can be purchased from the MSU Extension office if you would like one for yourself.
8. Many of the reference materials you will need to complete the book are at the end of the file. We strongly encourage you to keep these so you can refer to them while you are training.

**Winter Achievement Option  
Bring to  
Winter Achievement  
for Interview  
January 21**

e



Identify the obstacles by their course numbers.

Dog Walk \_\_\_\_\_

Broad Jump \_\_\_\_\_

Chute \_\_\_\_\_

Weaves \_\_\_\_\_

A-Frame \_\_\_\_\_

Tunnel \_\_\_\_\_

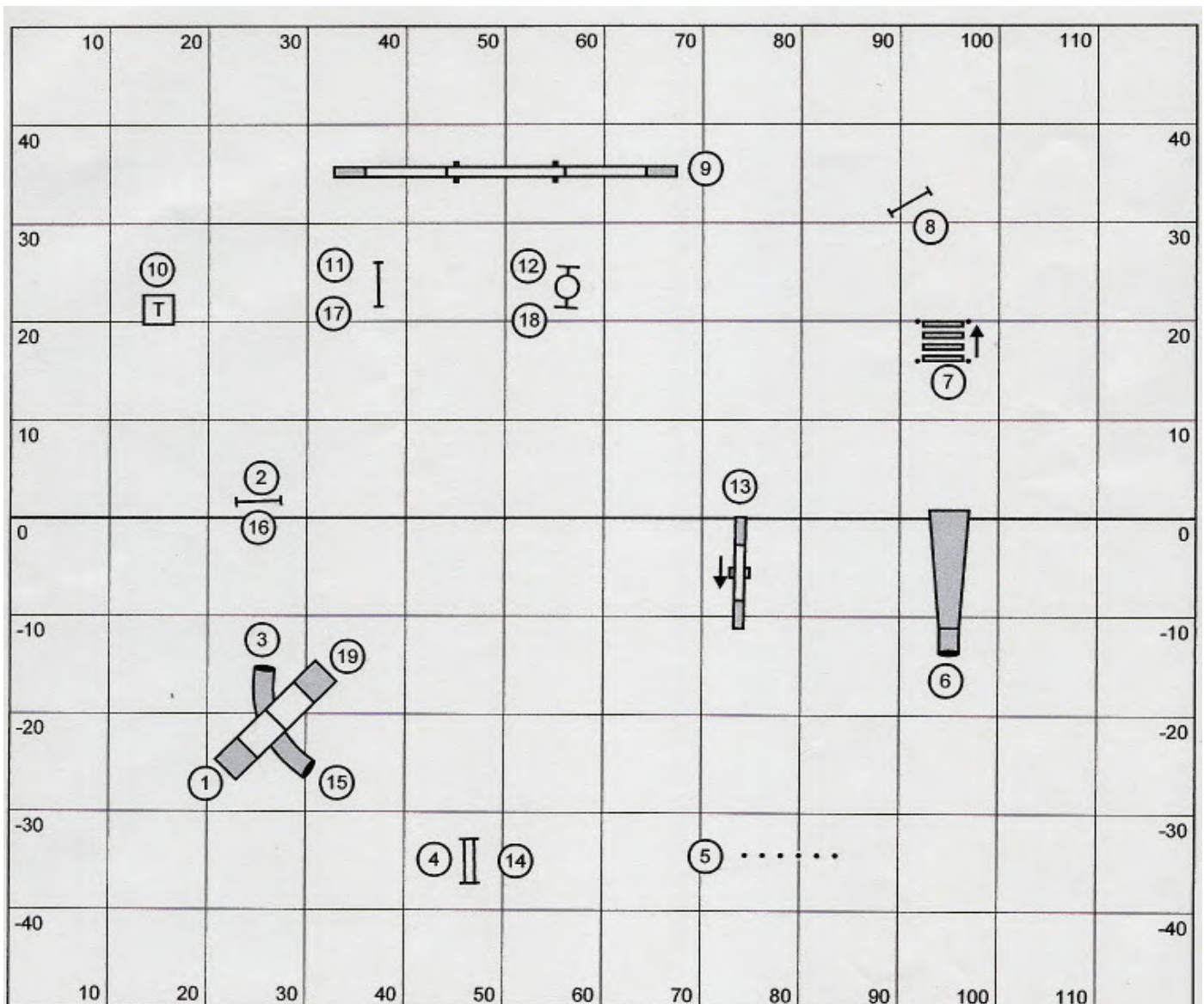
Table \_\_\_\_\_

Tire Jump \_\_\_\_\_

Teeter \_\_\_\_\_

# 4-H Agility

Senior Only



You have just been promoted to agility ring steward.

This is a map for which class?    Advanced                      Excellent

What needs to be added or removed to make this a Beginner Class?

---



---

There is also an obstacle that was used in Agility last year but has been removed from most Agility clubs because of safety. Which one is it? \_\_\_\_\_

Using the Judging Quick Reference for All Classes material, assign points off or NQ to the following things you will see when judging. If you can't find something in the Judging Reference, it is okay and no points should be deducted. Leave those items blank.

- Improper collar or tags on collar \_\_\_\_\_
- Touching the dog \_\_\_\_\_
- Abuse of dog in ring \_\_\_\_\_
- Receiving outside assistance \_\_\_\_\_
- Dog jumps on and off the table \_\_\_\_\_
- Missing a contact zone \_\_\_\_\_
- Performing an obstacle out of sequence \_\_\_\_\_
- Dog stops working (fails to perform) \_\_\_\_\_
- Dog fouls ring \_\_\_\_\_
- Missing a contact zone \_\_\_\_\_
- Knocking down a jump \_\_\_\_\_
- Walking over the broad jump \_\_\_\_\_
- Jumping a jump that has already been knocked down \_\_\_\_\_
- Taking an obstacle out of order \_\_\_\_\_
- Time Faults \_\_\_\_\_
- Guiding with the Collar \_\_\_\_\_
- Dog Leaving the Ring \_\_\_\_\_
- Food in the ring \_\_\_\_\_
- Knocking down a bar on a jump \_\_\_\_\_
- Handler knocks down a jump \_\_\_\_\_
- Yelling too loudly at the dog \_\_\_\_\_
- Touching an obstacle \_\_\_\_\_
- Guiding the dog by the collar \_\_\_\_\_
- Exceeding the course time \_\_\_\_\_
- Performing an obstacle out of sequence \_\_\_\_\_

Your score sheet has 5 points taken off as a refusal. What is a refusal?

---



---



---



---



---



---



---



---



---



---



---



---

Source: 2014 Michigan 4-H Agility Manual  
 Information found on page 19 and 20 of this book

Terms Used in Obedience and Rally

Match definition with meaning by putting letter on the line after the term.

Down \_\_\_\_\_

Finish \_\_\_\_\_

Sit \_\_\_\_\_

Withers \_\_\_\_\_

Heel Position \_\_\_\_\_

Front \_\_\_\_\_

Incorrectly Performed Station \_\_\_\_\_

Luring \_\_\_\_\_

Principal Part \_\_\_\_\_

Pause \_\_\_\_\_

A. Complete stop of forward motion by the handler

B. Dog sits in front of the handler, close enough for handler to touch dog's head

C. Highest point of the dog's shoulder

D. Dog goes from in front of the handler to heel position

E. Tricking the dog into believing the handler has a reward to tempt the dog into position

F. Each rally station or obedience exercise has certain parts that must be completed correctly. If not penalties from NQ/DQ to points off are given.

G. Dog's body is on the ground; weight is off feet & legs

H. Dog on handler's left side straight in line with the direction the handler is facing

I. One or more principal parts of a station not performed or performed incorrectly (Rally)

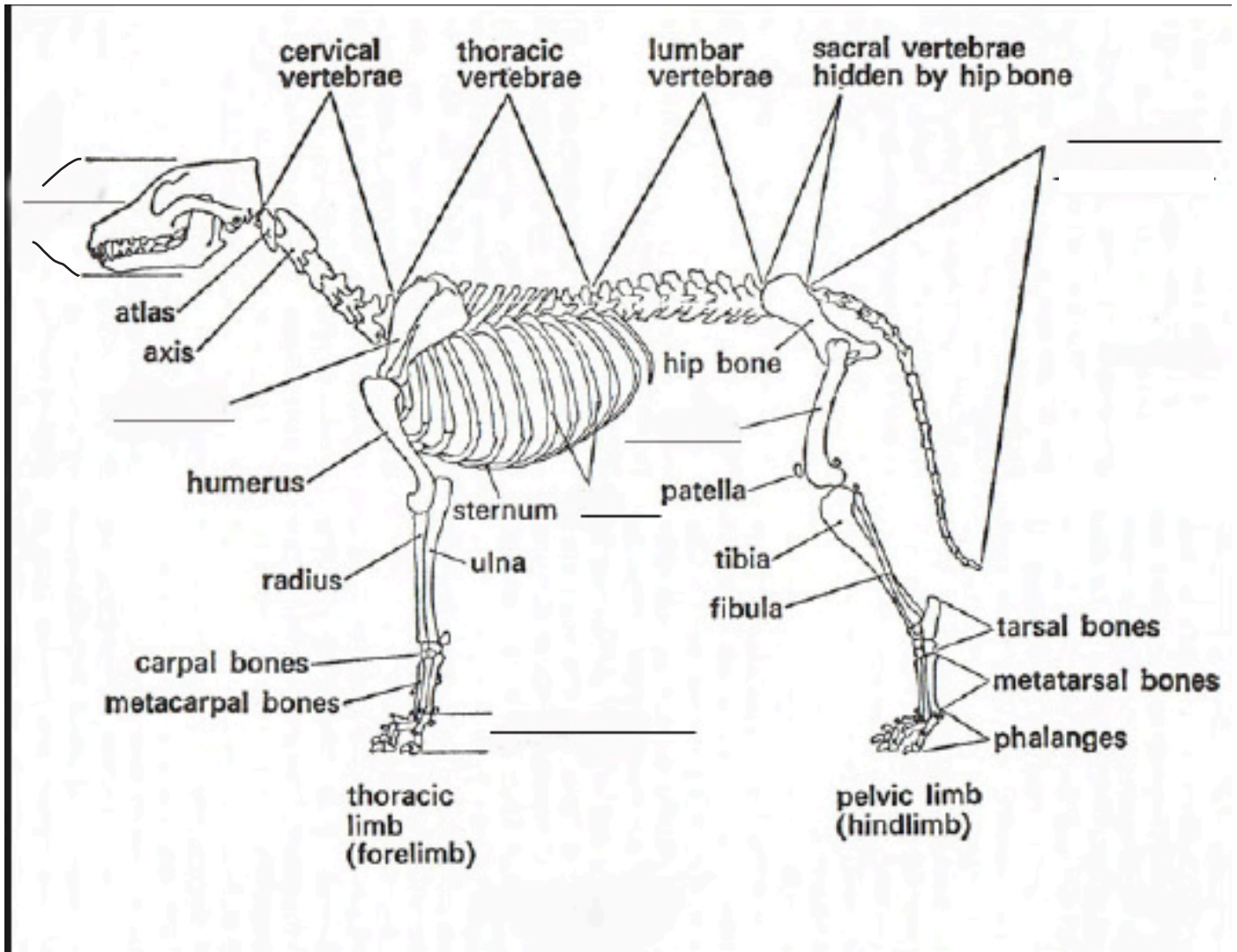
J. Dog has rear and/or hocks on the ground and is not moving forward or backward

Source: Glossary of Rally Terms and Glossary of Obedience Terms found page 21.

# Canine Anatomy

Senior Only

Write the number on the line that indicates it



1. skull

5. ribs

2. scapula

6. coccygeal vertebrae

3. phalanges

4. femur

Image from <http://www.imgarcade.com>

# Breed Knowledge

Intermediate & Senior  
Complete

Name the 7 AKC Groups. Name one breed for each group. Check last year's book for help.

_____	_____
_____	_____
_____	_____
_____	_____
_____	_____
_____	_____
_____	_____

## Seniors Only

### Dog Trivia

What were the 2 original AKC groups? \_\_\_\_\_

How many points do you need to move-up in St. Clair County 4-H Obedience? \_\_\_\_\_

### True or False

An electronic training collar can be used at Fair. \_\_\_\_\_

In the state of Michigan a dog must be vaccinated for Rabies \_\_\_\_\_

The highest point of the shoulder is called the croup. \_\_\_\_\_

Ticks and round worms are internal parasites. \_\_\_\_\_

The extra nails that some dogs have on their front feet/legs are called tarsals. \_\_\_\_\_

The bump on the back of the dog's head is the stop. \_\_\_\_\_

Dogs from the Toy Group are placed there because of their playfulness. \_\_\_\_\_

A successful arson dog has to be able to learn and recognize specific scents. \_\_\_\_\_

A successful tracking dog works by sight, not smell. \_\_\_\_\_

A Canine Good Citizen is a dog who has good manners in public and has passed a test from AKC. \_\_\_\_\_

Source: akc.org website  
Dog Breeds section

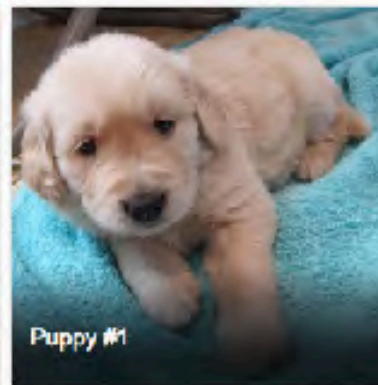
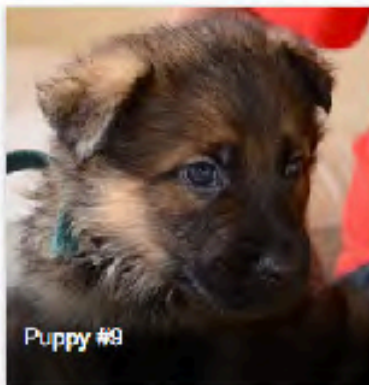
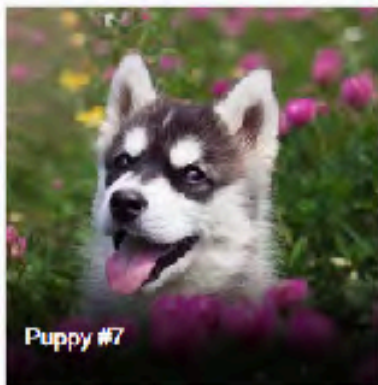
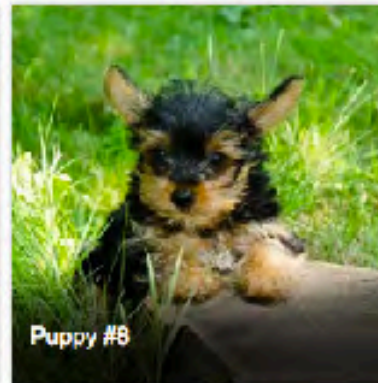
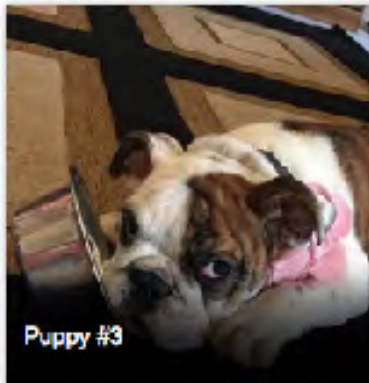
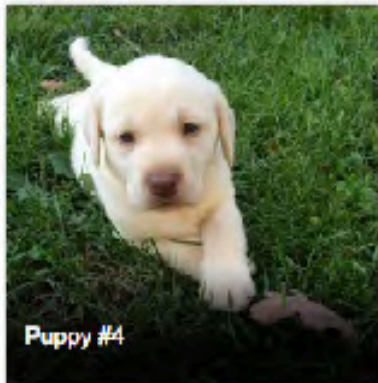
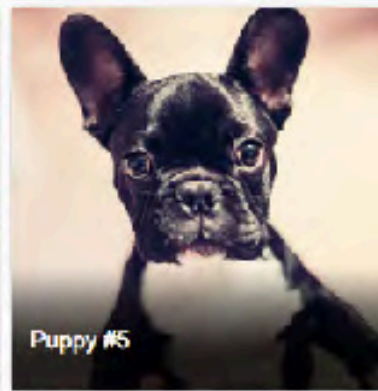
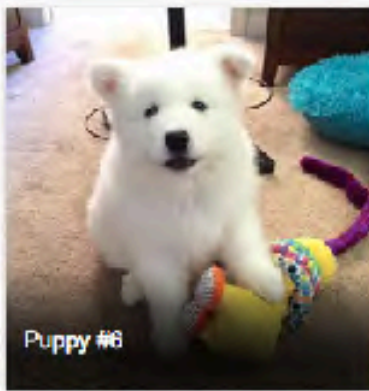
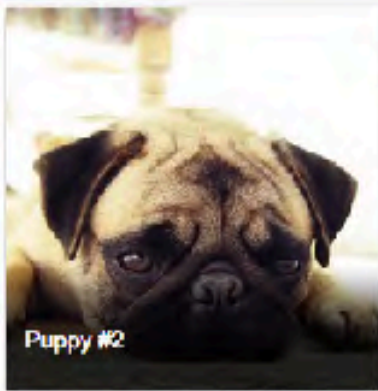
Also see The Complete Dog Book for Kids  
available at MSU Extension office.



# Breed Knowledge

Everybody Complete

Breeds are Siberian Husky, German Shepherd, Golden Retriever, Labrador Retriever, French Bulldog, Pug, Yorkshire Terrier, American Bulldog, Samoyed



Write the name on the correct line.

#1 \_\_\_\_\_

#6 \_\_\_\_\_

#2 \_\_\_\_\_

#7 \_\_\_\_\_

#3 \_\_\_\_\_

#8 \_\_\_\_\_

#4 \_\_\_\_\_

#9 \_\_\_\_\_

#5 \_\_\_\_\_

Taken from akc.org

# Stages of Dog Development

Complete as Directed



Match the stage of development with description or age of puppy.

Column A All Complete	Column B Int. & Sr. Complete	Column C Senior Complete
___ Neonatal period	___ Human Socialization period	___ Awareness period
___ Canine Socialization period	___ Flight Instinct period	___ Fear Impact period
___ Transitional period	___ Seniority Classification period	___ Second Fear Impact period
	___ Maturity period	

1. This period may be marked by an increase in aggression and a renewed testing for leadership.
2. 8-10 weeks, any traumatic, painful or frightening experiences will have a more lasting impact on the puppy than at any other time.
3. Puppy not able to regulate his body temperature, he cannot see or hear.
4. Significant changes in brain waves are happening and puppy is able to learn from experience and retain that information.
5. 6-14 months, dog may suddenly be reluctant to approach something new, or become territorial.
6. Lasts a few days to several weeks, the puppy will venture off on his own and may turn a deaf ear when called. He has a physiological need to chew at this stage.
7. 12-49 days, puppy learns the various behaviors that make him a dog. It is critical that puppy stays with mother at this time.
8. Puppy's eyes will open, although he cannot still see. He will get his first teeth. He will begin to react to sound.
9. Dog needs to learn who the pack leader is, he will take this position if the humans in the house do not.
10. The best time to bring a puppy home. The best time to introduce him to all the things that will play a part in his life. Learning at this age is permanent.

**Source:** Teaching Dog Obedience Classes, The Manual for Instructors

This information will be made available to all leaders.

## Interview

Come prepared to talk about your dog, training, and this book.

### Bonus Activities - Leadership and Involvement

List the dog related activities you have participated in since Fair 2015. They may or may not be 4-H related. Example: attended your clubs training classes, attended Dog Project Committee meetings, did routine grooming of your dog.

Your involvement in the World of Dogs will be used to break any ties in the final scoring.

You are strongly encouraged to complete a project record book or create a poster and sign up for Winter Achievement so your interview is completed before Fair.



A special thank you to the Teen Leaders of the SCC Dog Project for their dedication and hard work that has made this record book possible. You are the leaders of the future.

**MICHIGAN STATE**  

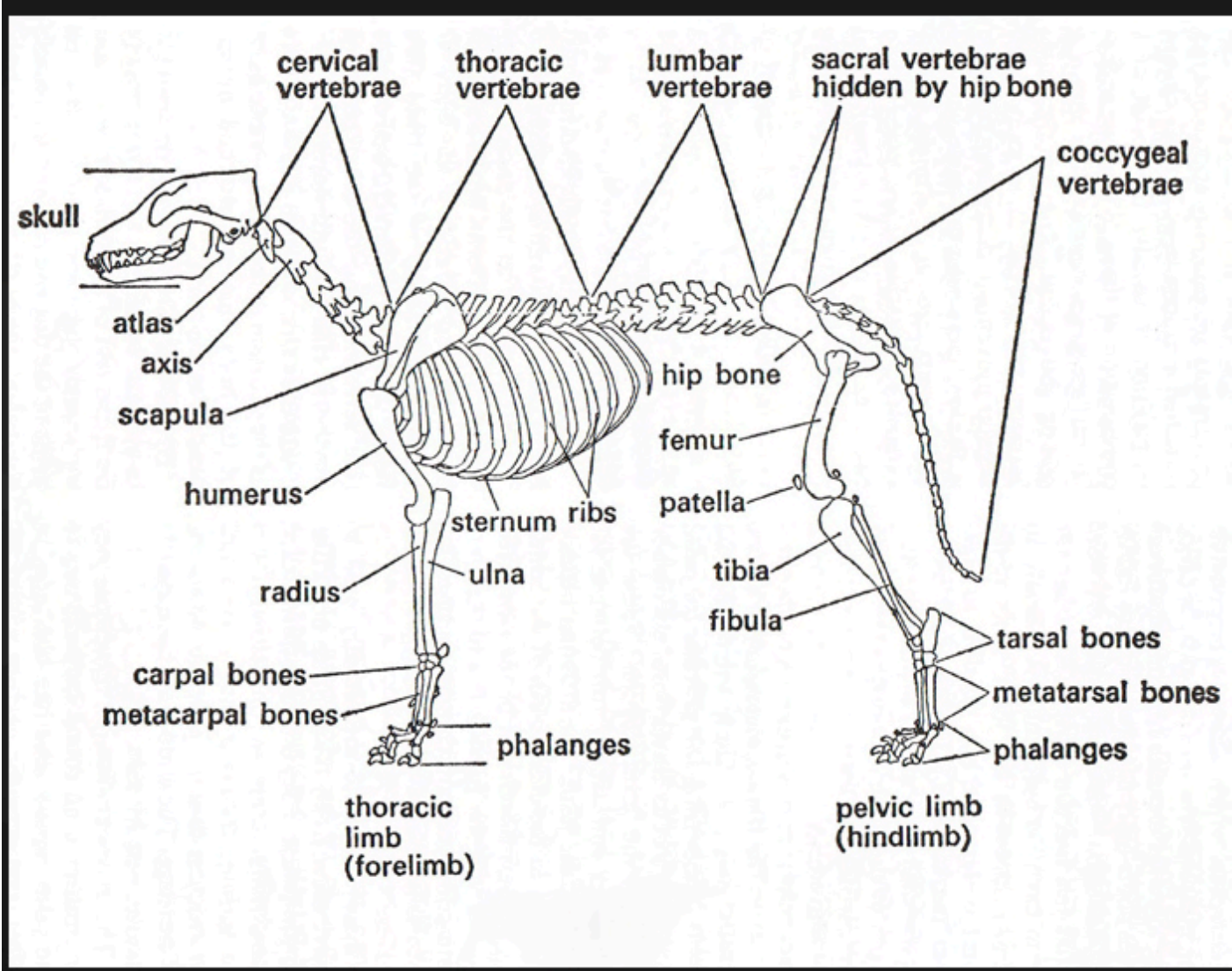
---

**UNIVERSITY**

**Extension**

MSU is an affirmative-action, equal-opportunity employer. Michigan State University Extension programs and materials are open to all without regard to race, color, national origin, gender, gender identity, religion, age, height, weight, disability, political beliefs, sexual orientation, marital status, family status or veteran status.

The following pages are included to help you complete this book. Please print them and include in your notebook. You will be given other materials as you continue training your dog. You will need this information to get ready for Fair.



## MICHIGAN 4-H AGILITY JUDGING QUICK REFERENCE FOR ALL CLASSES

All Classes: Standard Course Time (SCT) = 1.0 to 1.5 seconds/yards + 5 seconds pause  
All Classes: Maximum course time = 3 minutes per dog

BEGINNERS	INTERMEDIATE	ADVANCED
On Leash: Handlers may jump the jumps with dogs. Buckle collars - NO TAGS	Off Leash: Handlers may not jump the jumps with dogs. Buckle collars - NO TAGS.  Dogs must do weaves correctly. Dog enters with first pole on the left. (See page 9 "Judging Michigan 4-H Agility - Judging Weaves in Intermediate Level" for complete rules.)	Off Leash: Handlers may not jump the jumps with dogs. Buckle collars - NO TAGS

### 1 POINT FAULTS:

Time Faults: 1 Fault for every 2 Seconds over SCT (1 Fault = 1 Point)	Time Faults: 1 Fault for every 2 seconds over SCT (1 Fault = 1 Point)	Time Faults: 1 Fault for every 2 seconds over SCT (1 Fault = 1 Point)
--	--	--

### 2 POINT FAULTS:

<ul style="list-style-type: none"> <li>▶ Touching the dog</li> <li>▶ Dropping the leash between obstacles</li> <li>▶ Running by an obstacle</li> <li>▶ Performing on an obstacle out of sequence</li> <li>▶ Jumping on and off the table (dog)</li> <li>▶ Guiding dog/Tight leash</li> <li>▶ Receiving outside assistance</li> <li>▶ Touching an obstacle</li> </ul>	<ul style="list-style-type: none"> <li>▶ Touching the dog</li> <li>▶ Running by an obstacle</li> <li>▶ Performing on an obstacle out of sequence</li> <li>▶ Jumping on and off the table (dog)</li> <li>▶ Guiding dog with collar</li> <li>▶ Receiving outside assistance</li> <li>▶ Touching an obstacle</li> </ul>	<ul style="list-style-type: none"> <li>▶ Touching the dog</li> <li>▶ Running by an obstacle</li> <li>▶ Performing on an obstacle out of sequence</li> <li>▶ Jumping on and off the table (dog)</li> <li>▶ Receiving outside assistance</li> <li>▶ Touching an obstacle</li> </ul>
--	--	---

### 5 POINT FAULTS:

Refusals: Dog makes contact with obstacle - puts any feet on and jumps off. Includes any significant pause or hesitation at any obstacle.	Refusals: Dog makes contact with obstacle - puts any feet on and jumps off. Includes any significant pause or hesitation at any obstacle.	Refusals: Dog makes contact with obstacle - puts any feet on and jumps off. Includes any significant pause or hesitation at any obstacle.
<ul style="list-style-type: none"> <li>▶ Knocking down jump (dog or handler)</li> <li>▶ Knocking down a bar on a jump</li> <li>▶ Jumping a knocked-down jump (dog)</li> <li>▶ Improper collar or collar with tags</li> </ul>	<ul style="list-style-type: none"> <li>▶ Knocking down jump (dog or handler)</li> <li>▶ Knocking down a bar on a jump</li> <li>▶ Jumping a knocked-down jump (dog)</li> <li>▶ Improper collar or collar with tags</li> </ul>	<ul style="list-style-type: none"> <li>▶ Knocking down jump (dog or handler)</li> <li>▶ Knocking down a bar on a jump</li> <li>▶ Jumping a knocked-down jump (dog)</li> <li>▶ Improper collar or collar with tags</li> </ul>

Page 1 of 2 (Continue to Next Page)

## MICHIGAN 4-H AGILITY

### JUDGING QUICK REFERENCE FOR ALL CLASSES

All Classes: Standard Course Time (SCT) = 1.0 to 1.5 seconds/yards + 5 seconds pause  
 All Classes: Maximum course time = 3 minutes per dog

BEGINNERS	INTERMEDIATE	ADVANCED
<p>On Leash: Handlers may jump the jumps with dogs. Buckle collars - NO TAGS</p>	<p>Off Leash: Handlers may not jump the jumps with dogs. Buckle collars - NO TAGS.</p> <p>Dogs must do weaves correctly. Dog enters with first pole on the left. (See page 9 "Judging Michigan 4-H Agility - Judging Weaves in Intermediate Level" for complete rules.)</p>	<p>Off Leash: Handlers may not jump the jumps with dogs. Buckle collars - NO TAGS</p>

#### 10 POINT FAULTS:

<p>Missing a Contact Zone (Dog does not need to repeat the contact obstacle.)</p>	<p>Missing a Contact Zone (Dog does not need to repeat the contact obstacle.)</p>	<p>Missing a Contact Zone (Dog does not need to repeat the contact obstacle.)</p>
---	---	---

#### ELIMINATION - NONQUALIFYING:

<ul style="list-style-type: none"> <li>▶ Exceeding the course time</li> <li>▶ Dog fouling in the ring</li> <li>▶ Excessive handler loudness</li> <li>▶ Abuse of dog in the ring</li> <li>▶ Dog leaving the ring and stops working</li> <li>▶ Failure to perform</li> <li>▶ Walking the broad jump</li> <li>▶ Food or toys in the ring</li> <li>▶ 3 attempts or refusals on any obstacle</li> </ul>	<ul style="list-style-type: none"> <li>▶ Exceeding the course time</li> <li>▶ Dog fouling in the ring</li> <li>▶ Excessive handler loudness</li> <li>▶ Abuse of dog in the ring</li> <li>▶ Dog leaving the ring and stops working</li> <li>▶ Failure to perform</li> <li>▶ Walking the broad jump</li> <li>▶ Weave poles not completed or completed incorrectly</li> <li>▶ Food or toys in the ring</li> <li>▶ 2 attempts or refusals on any obstacle</li> </ul>	<ul style="list-style-type: none"> <li>▶ Exceeding the course time</li> <li>▶ Dog fouling in the ring</li> <li>▶ Excessive handler loudness</li> <li>▶ Abuse of dog in the ring</li> <li>▶ Dog leaving the ring and stops working</li> <li>▶ Failure to perform</li> <li>▶ Walking the broad jump</li> <li>▶ Weave poles not completed or completed incorrectly</li> <li>▶ Guiding the dog with collar</li> <li>▶ Food or toys in the ring</li> <li>▶ 1 refusal on any obstacle</li> <li>▶ More than 1 attempt on any obstacle</li> <li>▶ Flying off the teeter-totter</li> </ul>
--	--	---

**Qualifying Score for all classes is 85 points or more out of 100 points.**

## Glossary of Rally Terms

**Brisk, briskly** – keenly alive, alert, energetic

**Command** – verbal order from handler to dog

### Deductions:

**Minor deduction** – 1 to 2 points

**Minor to Substantial deduction** – 1 to 10 points

**Substantial deduction** – 6 to 10 points

- Re-tries of a station are an automatic 3 point deduction
- Incorrectly Performed stations are an automatic 10 point deduction

**Directly** – immediately, without deviation or hesitation

**Down** – Dog lying in a prone position

**Finish** – When commanded/signaled to finish, the dog goes smartly to heel position and sits

**Front** – A dog sits in front of the handler, close enough that the handler can touch the dog's head

**Guiding Gently by the Collar** – control of the dog by holding any part of the collar with minimal pressure on the dog's neck

**Handler Returns to Heel Position** – the handler must return to heel position by walking around behind the dog (unless otherwise stated in these regulations)

**Heel Position** – dog is at the handler's left side straight in line with the direction the handler is facing; the area from the dog's head to shoulder is to be in line with the handler's left hip; and the dog should be close to, but not crowding its handler so that the handler has freedom of motion at all times

**Incorrectly Performed Station (IP)** – one or more principal parts of a station not performed or performed incorrectly

**Lame** – irregularity or impairment of the function of locomotion, irrespective of the cause or how slight or severe

**Luring** – the appearance of having a reward to tempt the dog along or into position. No reward needs to be present.

**Natural Manner** – not artificial, free of affectation; what is customarily expected in the home or public places

**Order** – direction from judge to handler, either verbal or nonverbal

**Pause** – a complete stop of forward motion by the handler **Pivot** – turning in the circle occupied by the handler before they started the turn; a turn in place

**Pleading** – repeated urgent commands and/or signals to elicit the proper behavior from the dog while the dog remains unresponsive to handler's commands and/or signals

**Repeat of Station/Retry** – a station that is repeated in its entirety, including the approach, before beginning the next station

**Signal** – nonverbal direction from the handler to dog **Sit** – the dog has its rear and/or hocks on the ground

**\*\*\*Station Not Attempted By The Handler** – a station skipped/missed by the handler before attempting the next station

This results in an NQ if handler completely passes the station or handler approaches the sign but **does not do** the exercise.

**Training** – as related to where a student-handler/teacher-judge relationship is established, with or without compensation

**Turn in Place** – turning in a circle that was occupied by the handler before they started to turn

**Withers** – highest point of the dog's shoulder

## General Information for Rally and Obedience and Agility

1. No food in the ring at Fair. No food pouches either.
2. A dog who eliminates in the ring is disqualified.
3. Tight leashes are not desirable in rally or obedience or any agility class where they are allowed. A tight leash can lose you a few points to as much as a disqualifying score.
4. Harnesses are not allowed in rally, showmanship, obedience or agility.
5. Expected collars for rally and obedience are buckle collars, choke chain collars or martingale collars. Agility dogs must have a buckle collar.
6. In AKC obedience trials there are rules about what you can say and when you can say it. These rules do not apply to St. Clair County 4-H until you get to Novice Obedience (new Level 4)
7. In Rally and Obedience Levels 1-3 you may talk to your dog as much as you want. You may not touch your dog unless a particular sign says it's okay. In Agility you may talk to your dog the whole time, you will lose points for touching.
8. DO NOT whistle, or try to trick your dog into believing you have food.
9. Don't snap your fingers at your dog. It's just irritating and the judge will call it a second command. The first time you do it you will lose about 10 points and the second time you will be disqualified. Use the dog's name followed by one word.
- 10 Agility Obstacle Class Limits
  - Teeter/See-saw and Sway Bridge - ONLY in Advanced
  - Weaves - Introduced in Intermediate with different scoring; 6 only
  - Dog Walk - Intermediate
  - Window Jump and Spread Jump - Included as Fair Superintendent and Judge choose.
11. With exceptions for standing a dog, touching will cause points to be deducted.
12. Points required to move up:
  - Rally 80
  - Agility 85
  - Obedience 180

A list of the new classes and new level names will be posted on the MSUE website and the St. Clair County Do Project GROUP page.



## General Dog Show Etiquette

1. Respect your dog's need for space and the space of other dogs and people.
2. You must bring a crate. It's all about giving your dog a safe place to be. It is very stressful to dogs to spend a day with a bunch of people and dogs they do not know.
3. You do not want to be the person who causes another 4-Her/dog to be disqualified because of something you did.  
So..... If you are eating, stay away from where dogs are working. Try very hard not to make any loud noises that could disturb the working dogs. This is really important for your friends who are doing obedience sits and downs. Stay away from that ring, including on the other side of the fencing.  
So..... If you come to practice on Friday be sure that your dog has peed and pooped before you bring them into the rings. Dogs use their urine and feces to mark land that is theirs and to tell other animals they have been there. If your dog marks an area on Friday there is a really, really, really good chance he will do the same thing on Saturday. There is also a really, really, really good chance another dog will go where your dog went to cover up their scent with their own. There is no way to cover up the scent left by these dogs so others aren't attracted to the same place.
4. When waiting for your turn, listen carefully to directions given to you by the steward (adult helper) and do what they tell you. Don't enter rings without an invitation.
5. You are ALWAYS expected to clean up after your dog. It's the responsible thing to do.
6. Stay away from ring entrances unless you were told to be there by a leader, steward or judge.
7. All animals that come to Fair have to meet certain vaccination requirements. Michigan State Law requires that your dog have a current Rabies vaccination. The other required vaccinations are to keep your dogs from catching something from another dog or your dog making another dog sick.
8. Your dog may wear a pinch collar on the grounds this year only.
9. You may choose to leave that collar on when you show, if you do and do really well in your division, you may not be Grand or Reserve Champion.
10. Your Fair Age is how old you were January 1, 2017. Or subtract the year you were born from 2016 (2016-2005 = 11) Your Fair Age is 11. Use the chart at the front of Fair Book.
11. If you do not complete your interview you can not be Grand or Reserve Champion in any activity for dogs.